

# HDMI Digital Monitor Output Camera

*Splendidly High Quality*

## 1.5M Pixel CCD Camera

## MODEL : ARTCAM-150P4-HDMI

### SPECIFICATION

- Embedded USB2.0 interface
  - SXGA 12~18FPS
  - Taking 10bit image function  
\* Only when you use SDK
  - SDK(DLL)
  - 1.5M Pixel CCD sensor
  - Color / Monochrome
  - HDMI (High Definition Multimedia Interface) Ver1.2
- Sensor : 1.5M Pixel CCD
  - Active Pixels : 1392 (H) × 1040 (V)
  - Active Imager Size : 4.65 × 4.65 μm

- Transfer Method : Progressive Scan
- Shutter Type : Global Shutter
- Lens Mount : C Mount
- Out Put : USB2.0 (8 or 10bit digital output)  
HDMI Ver1.2 1080p@60
- USB Standard : USB2.0 Bulk transfer, Streaming output
- Size : 50(W) × 56(H) × 75(D)mm
- Power Supply : +5V 1.5A outlet
- Running Temperature : 0°C ~ 35°C (Recommended),  
Humidity Under 80% (No Condensation)

Operation System : WINDOWS XP  
 Recommended PC : Above ICH5  
 CPU : Pentium4 Above 1.7GHz (Need embedded USB2.0 port)  
 Memory : Above 512MB  
 Included : Device Driver, Viewer Software, 5V AC Adapter, 1.8m USB cable  
 Optional : C Mount Lens, HDMI Monitor, 1.5m / 3m / 5m HDMI Cable,  
 SDK, HDMI-DVI converting connector, DVI cable

## 1.3M Pixel CMOS Camera

## MODEL : ARTCAM-130MI-HDMI

### SPECIFICATION

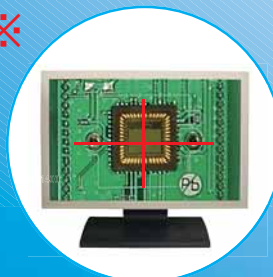
- Embedded USB2.0 interface
  - SXGA 15FPS
  - Taking 10bit image function  
\* Only when you use SDK
  - SDK(DLL)
  - 1.3M Pixel CMOS sensor
  - Color / Monochrome
  - HDMI (High Definition Multimedia Interface) Ver1.2
- Sensor : 1.3M Pixel CMOS
  - Active Pixels : 1280 (H) × 1024 (V)
  - Active Imager Size : 5.2 × 5.2 μm

- Transfer Method : Progressive Scan
- Shutter Type : Rolling Shutter
- Lens Mount : C Mount
- Out Put : USB2.0 (8 or 10bit digital output)  
HDMI Ver1.2 1080p@60
- USB Standard : USB2.0 Bulk transfer, Streaming output
- Size : 50(W) × 56(H) × 75(D)mm
- Power Supply : +5V 1.5A outlet
- Running Temperature : 0°C ~ 35°C (Recommended),  
Humidity Under 80% (No Condensation)

Operation System : WINDOWS XP  
 Recommended PC : Above ICH5  
 CPU : Pentium4 Above 1.7GHz (Need embedded USB2.0 port)  
 Memory : Above 512MB  
 Included : Device Driver, Viewer Software, 5V AC Adapter, 1.8m USB cable  
 Optional : C Mount Lens, HDMI Monitor, 1.5m / 3m / 5m HDMI Cable,  
 SDK, HDMI-DVI converting connector, DVI cable



Connect to PC



Connect to HDMI monitor

✘ Cross cursor is equipped



Connect to a LCD or HDMI connector and you can see images!

You don't need PC to see images!



NOTES: Our HDMI output camera may not work at some HDMI monitors.

We checked those monitors:

- Most of PC monitor with HDMI or DVI connector --- OK ○
- TV monitor with HDMI
  - SHARP(AQUOS) --- OK ○
  - TOSHIBA(REGZA) --- OK ○
  - SONY(BRAVIA) --- NG ✘
  - PANASONIC(VIERA) --- NG ✘

**We sell HDMI monitors to world wide, ask more detail to your sales representative.**



**ARTRAY Co., Ltd.**

1-17-5 Kouenjikita Suginami-Ku, Tokyo 166-0002, Japan  
 TEL : +81-3-3389-5488 FAX: +81-3-3389-5486  
 Email : sales@artray.us URL : www.artray.us

- ARTCAM is ARTRAY's registered trademark.
- All product's specifications are subject to change.