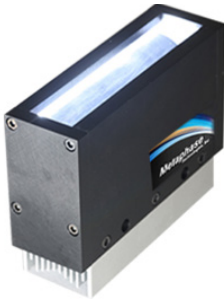


# ECL

Eclipser  
Dark Field Line Light  
Model: ECL-LL209



## The Eclipser

Patent Pending **Dark Field Line Light** never before offered to the industry. Combining strategically positioned LED lights on innovative dark strips and newly developed light ray forming optics allows discovery of previously overlooked flaws in optically clear glass and plastic Quality Control systems. Bending light encircles particles and air pockets creating a glow illuminating the imperfection that can now be seen on a sub-pixel level.

## BENEFITS

- Patented optics coupled with a dark field creates superior contrast
- Illuminates previously undetectable clear on clear imperfections
- Amplifies sub-micron defects at a sub-pixel level
- Speeds inspection time from "seconds" to "milliseconds"
- Improved accuracy minimizes returns, increasing customer satisfaction
- One light allows a smaller footprint and more versatile installations
- Fewer components equals cost savings

## WAVELENGTH (nanometers)

\* xxx = size designation. Custom wavelengths available upon request.

ECL-LLxxx*-W	White 6000K
ECL-LLxxx*-R	Red 630
ECL-LLxxx*-G	Green 530
ECL-LLxxx*-B	Blue 470
ECL-LLxxx*-IR	Infrared 850

## APPLICATIONS

- Extruded glass tubing
- Optical lenses
- Extruded and injection molded plastic
- Plate glass

## COMPLIANCE



Specifications are subject to change.  
Copyright © Metaphase Technologies. All rights reserved.  
MT 140008

## SPECIFICATIONS

Current Consumption	0.5 - 24 Amp @ 24Vdc
Housing	Aluminum
Finish	Black Anodized
Intensity Uniformity	+/-5%
Operating Temperature	160° F Max
Illuminance	1.8 Million Lux
Lifetime Hours	75,000 Hours

## HOUSING DIMENSIONS

Metaphase is able to produce these line lights in sizes ranging from 5" (127.0mm) to more than 150" (3810.0mm) allowing for a wide range of solutions.

## DRIVERS

Some drivers may not be compatible with all sizes due to current requirements, etc.

- **24V** - our most popular configurations for use with a standard 24v constant voltage power supply
- **ULC-2** - for use with constant current controllers such as our ULC-2 Universal Controller
- **ILS** - configure for strobing applications with power boost for increased intensity for rising and falling edge triggers
- **Keyence** - compatible with Keyence light controllers such as the Keyence CA-DC21E
- **Baumer** - compatible with Baumer VeriSens cameras
- **Cognex** - compatible with Cognex cameras

## CONTACT US

Contact your Metaphase Technologies representative at 215-639-8699 or your local representative for additional details, options, and customizations.

metaphase-tech.com

*Metaphase Technologies*  
211 Sinclair Rd, Suite 100  
Bristol, PA 19007 - USA