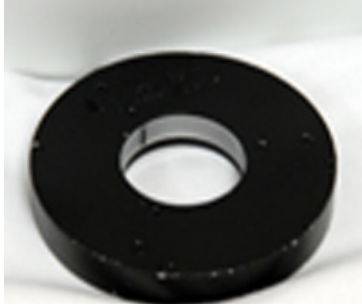


## MetaLight™ Round Off-Axis Ring Light Model#: ROARL101

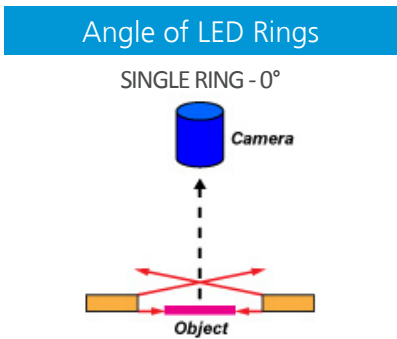


- Horizontal Plane of Light
- Useful for Highlighting Surface Defects
- Illuminates Specular Surfaces
- Configurable for Wavelength
- Economical

Part #	Color	Power Supply	Specifications:
ROARL101-W-24	White 5500K	24 volt power supply available upon request.	Current Consumption 0.1A
ROARL101-R-24	Red 630nm		Housing Anodized Aluminum
ROARL101-B-24	Blue 455nm		Intensity Uniformity +/-5%
ROARL101-G-24	Green 530nm		Operating Temperature 120° F Max
ROARL101-IRN-24	Infrared 850nm		Illuminance 75,000 Lux
ROARL101-IRL-24	Infrared 880nm		Compliance CE/RoHS
ROARL101-UVL-24	UV 395nm		Lifetime Hours 75,000 Hours
ROARL101-UVS-24	UV 365nm		

10 ft. flying leads come standard on all products.  
Light features built-in constant current driver.  
No expensive controller required.

Active Area	Dimensions
Ø2in Aperture Ø50.8mm Aperture	Ø3.80in x .67in Ø96.5mm x 16.9mm



### ORDERING INFORMATION:

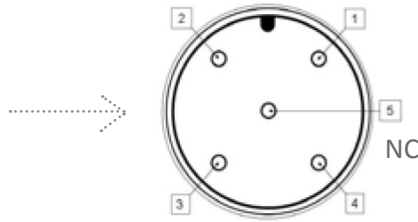
• R O A R L 1 0 1 -  - 2 4 -

<b>W</b>	White 5500k	<b>*BLANK</b>	10 ft. Flying Leads
<b>R</b>	Red 630nm	<b>T</b>	M12 Quick Disconnect
<b>G</b>	Green 530nm	<b>ILD</b>	In Line Dimmer
<b>B</b>	Blue 455 nm	<b>ILS</b>	In Line Strobe (customer provide trigger info)
<b>IRL</b>	Infrared 880nm		
<b>UVL</b>	(long) 395nm		
<b>UVS</b>	(short) 365nm		

## MetaLight™ Linear Front Light Model#: ROARL101

### M12 Connector

PIN #	Function
1	+24VDC
2	0-10VDC Intensity Control
3	Ground
4	Signal Ground



### Wiring Diagram

Flying Leads	Function
RED	+24VDC
BLACK	Ground
WHITE	+24VDC
GREEN	Ground

24 AWG 4 WIRES CABLE X 1  
When not using intensity control, connect 0-10V control line to +24 (Max Intensity Control = 25V) and intensity control ground to ground

### Drawing/Diagram

REVISIONS				
ZONE	REV.	DESCRIPTION	DATE	APPROVED
	D	REDRAWN IN SOLIDWORKS, KW	5/1/2012	

<p><b>PROPRIETARY AND CONFIDENTIAL</b> THE INFORMATION CONTAINED IN THIS DRAWING IS THE SOLE PROPERTY OF METAPHASE TECHNOLOGIES, INC. ANY REPRODUCTION IN PART OR AS A WHOLE WITHOUT THE WRITTEN PERMISSION OF METAPHASE TECHNOLOGIES, INC. IS PROHIBITED.</p>	<p>UNLESS OTHERWISE SPECIFIED: DIMENSIONS ARE IN INCHES TOLERANCES: FRACTIONAL: ±1/64 ANGULAR: BACH# 1/2° MIND ±2° TWO PLACE DECIMAL ±.01 THREE PLACE DECIMAL ±.005</p>	<p>NAME: KW DATE: 5/1/2012</p>	<p>METAPHASE TECHNOLOGIES, INC. TITLE: ROUND OFF AXIS RING LIGHT, 2 INCH</p>
	<p>INTERPRET GEOMETRIC TOLERANCING PER: MATERIAL:</p>	<p>Q.A. COMMENTS:</p>	<p>SIZE: DWG. NO. <b>B</b> ROARL101 SCALE: 1:1 WEIGHT: SHEET 1 OF 1</p>
	<p>FINISH</p>	<p>REV <b>D</b></p>	
	<p>APPLICATION: DO NOT SCALE DRAWING</p>		