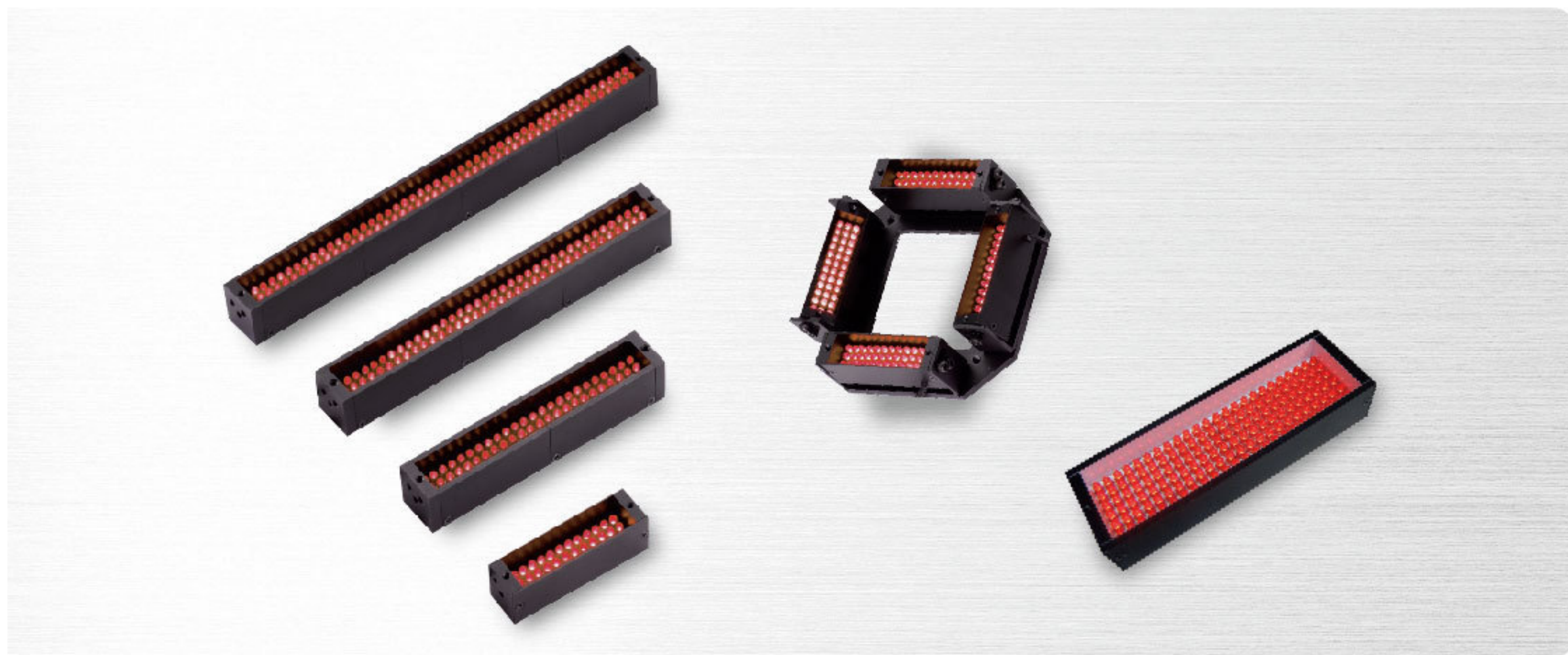


Bar Lights & Oblique Bar lights



Outline

Light direction and angle can be adjustable.
Suitable for large area lighting

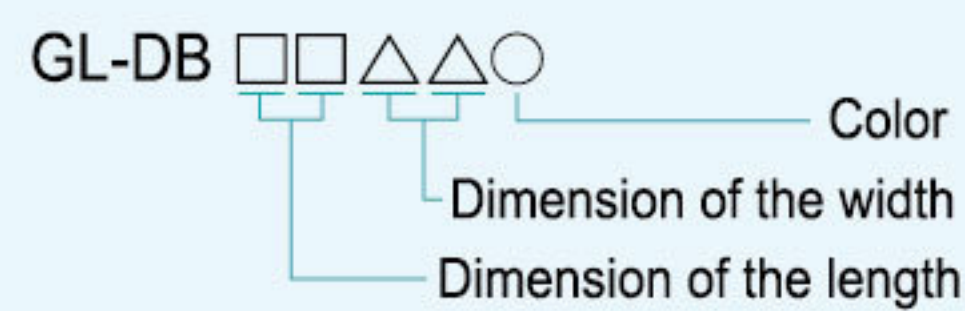
Feature

1. Light can be customized. The largest standard model is 510mm.
2. Shape is flexible to change to rectangular or square.
3. Diffusion rings are available

Major applications

1. Inspection for LED defect
2. Identify for multiple shapes
3. Fabrication substrates crack inspection, metal board surface inspection
4. Identify size measurement and shape for electronic parts

Model explanation



Available Models

Model	Color	Power Consumption	Weight (g)	Dimension
GL-DB3010R-24	●	24V/0.48W		
GL-DB3010W/B/G-24	○ ● ●	24V/0.72W	25	1
GL-DB3010IR-24	●	24V/0.48W		
GL-DB3010R-DP-24	●	24V/0.48W		
GL-DB3010W/B/G-DP-24	○ ● ●	24V/0.72W	26	2
GL-DB3010IR-DP-24	●	24V/0.48W		
GL-DB4520W/B/G-24	○ ● ●	24V/1.44W	36	3
GL-DB6020R-24	●	24V/1.44W		
GL-DB6020W/B/G-24	○ ● ●	24V/2.16W	41	4
GL-DB6020IR-24	●	24V/1.44W		
GL-DB8020W/B/G-24	○ ● ●	24V/2.88W	51	5
GL-DB11020R-24	●	24V/2.88W		
GL-DB11020W/B/G-24	○ ● ●	24V/4.32W	72	6
GL-DB11020IR-24	●	24V/2.88W		
GL-DB16020R-24	●	24V/4.32W		
GL-DB16020W/B/G-24	○ ● ●	24V/4.37W	101	7
GL-DB16020IR-24	●	24V/4.32W		
GL-DB21020R-24	●	24V/5.76W		
GL-DB21020W/B/G-24	○ ● ●	24V/8.64W	131	8
GL-DB21020IR-24	●	24V/5.76W		
GL-DB26020R-24	●	24V/7.2W		
GL-DB26020W/B/G-24	○ ● ●	24V/10.8W	160	9
GL-DB26020IR-24	●	24V/7.2W		
GL-DB31020R-24	●	24V/8.64W		
GL-DB31020W/B/G-24	○ ● ●	24V/12.96W	190	10
GL-DB31020IR-24	●	24V/8.64W		
GL-DB36020R-24	●	24V/10.08W		
GL-DB36020W/B/G-24	○ ● ●	24V/14.88W	222	11
GL-DB36020IR-24	●	24V/10.08W		

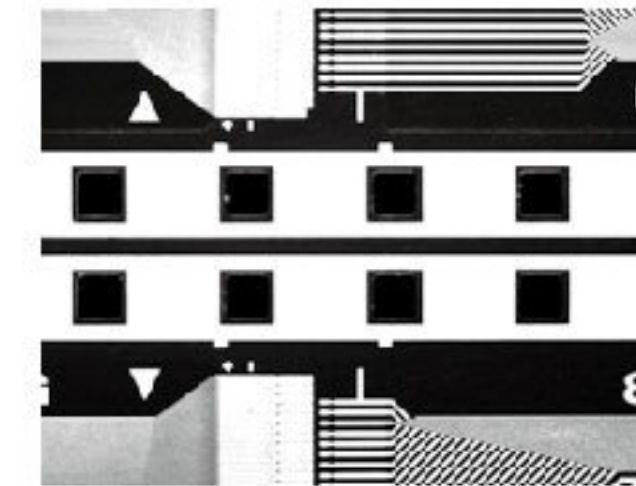
Imaging examples



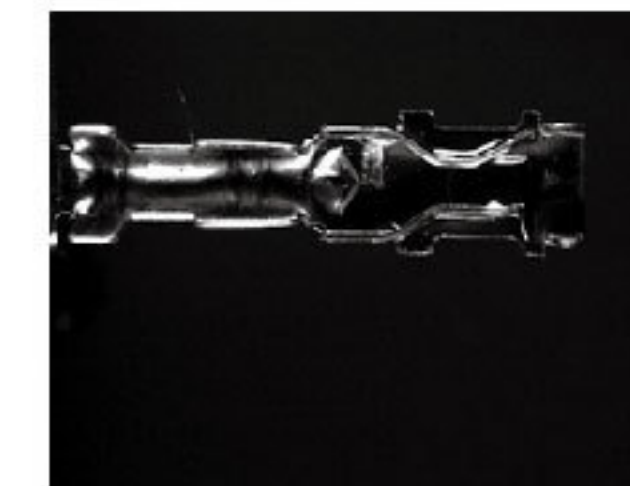
GL-DB6020B
DSP IC



GL-DB6020W
CF Card Character



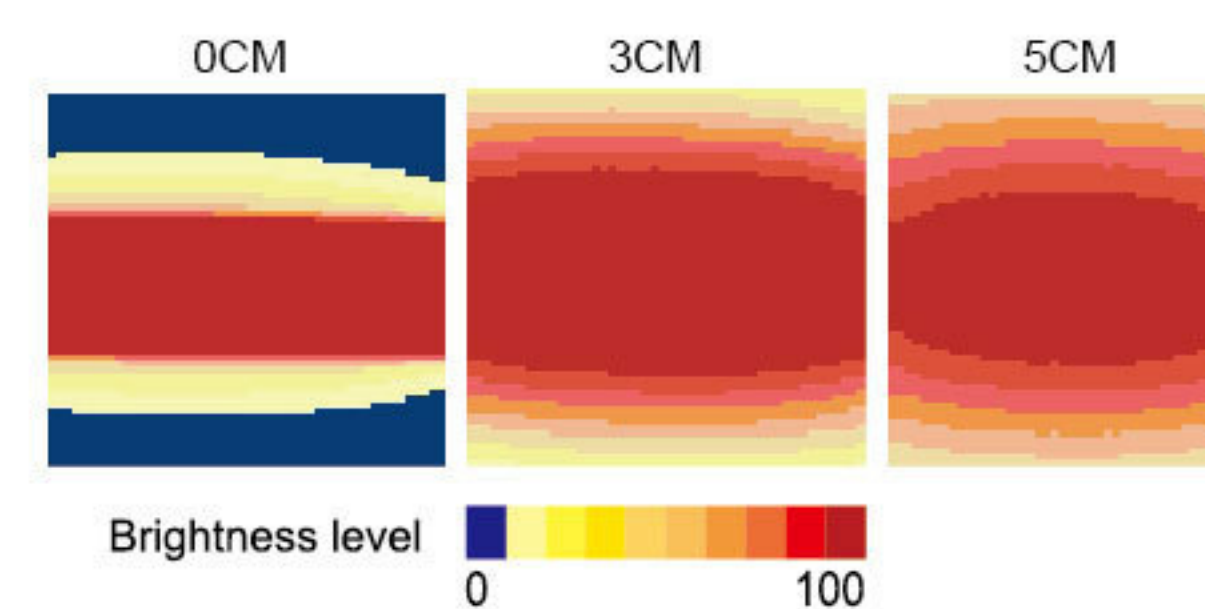
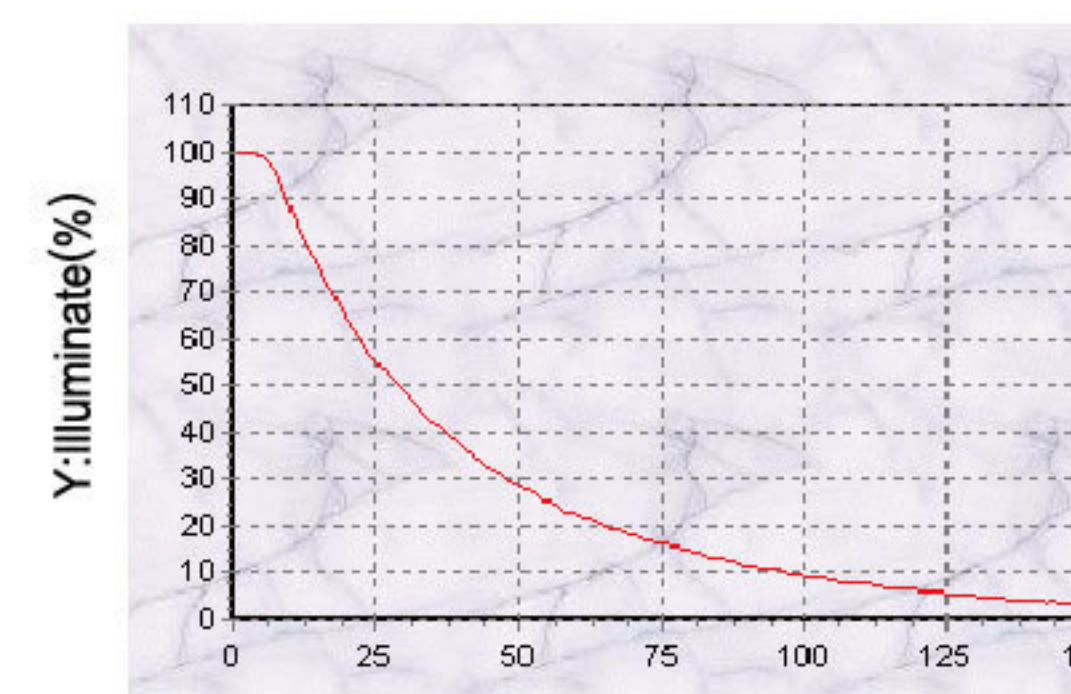
GL-DB6020W
Soft Bus



GL-DB6020W*2
Terminal

Luminous intensity distribution characteristics

GL-DB6020R Graph



Available Models

Model	Color	Power Consumption	Weight (g)	Dimension
GL-DB41020R-24	●	24V/11.52W		
GL-DB41020W/B/G-24	○ ● ●	24V/17.28W	253	12
GL-DB41020IR-24	●	24V/11.52W		
GL-DB46020R-24	●	24V/12.96W		
GL-DB46020W/B/G-24	○ ● ●	24V/19.2W	285	13
GL-DB46020IR-24	●	24V/12.96W		
GL-DB51020R-24	●	24V/14.4W		
GL-DB51020W/B/G-24	○ ● ●	24V/21.6W	317	14
GL-DB51020IR-24	●	24V/14.4W		
GL-DB6034R-24	●	24V/2.88W		
GL-DB6034W/B/G-24	○ ● ●	24V/4.32W	60	15
GL-DB6034IR-24	●	24V/2.88W		
GL-DB11034R-24	●	24V/5.76W		
GL-DB11034W/B/G-24	○ ● ●	24V/8.64W	623	16
GL-DB11034IR-24	●	24V/5.76W		
GL-DB16034R-24	●	24V/8.64W		
GL-DB16034W/B/G-24	○ ● ●	24V/12.96W	130	17
GL-DB16034IR-24	●	24V/8.64W		
GL-DB21034R-24	●	24V/46.08W		
GL-DB21034W/B/G-24	○ ● ●	24V/69.14W	180	18
GL-DB21034IR-24	●	24V/46.08W		
GL-DB26034R-24	●	24V/14.4W		
GL-DB26034W/B/G-24	○ ● ●	24V/21.6W	189	19
GL-DB26034IR-24	●	24V/14.4W		
GL-DB31034R-24	●	24V/17.28W		
GL-DB31034W/B/G-24	○ ● ●	24V/25.96W	300	20
GL-DB31034IR-24	●	24V/17.28W		
GL-DB6020R4-24	●	24V/(1.44W)*4		
GL-DB6020W4/B4/G4-24	○ ● ●	24V/(2.16W)*4	280	21
GL-DB6020IR4-24	●	24V/(1.44W)*4		
GL-DB8020W4-24	○	24V/(2.88W)*4	384	22
GL-DB11020R4-24	●	24V/(2.88W)*4		
GL-DB11020W4/B4/G4-24	○ ● ●	24V/(4.4W)*4	511	23
GL-DB11020IR4-24	●	24V/(2.88W)*4		
GL-DB11034R4-24	●	24V/(5.8W)*4		
GL-DB11034W4/B4/G4-24	○ ● ●	24V/(8.7W)*4	460	24
GL-DB11034IR4-24	●	24V/(5.8W)*4		
GL-DB16020R4-24	●	24V/(4.32W)*4		
GL-DB16020W4/B4/G4-24	○ ● ●	24V/(4.37W)*4	667	25
GL-DB16020IR4-24	●	24V/(4.32W)*4		
GL-DB21034R4-24	●	24V/(11.52W)*4		
GL-DB21034W4/B4/G4-24	○ ● ●	24V/(17.28W)*4	943	26
GL-DB21034IR4-24	●	24V/(11.52W)*4		
GL-DB31020R4-24	●	24V/(8.64W)*4		
GL-DB31020W4/B4/G4-24	○ ● ●	24V/(12.96W)*4	1286	27
GL-DB31020IR4-24	●	24V/(8.64W)*4		