

Still Using Frame Grabbers?

# 1.5M pixels High-definition USB2.0 CCD CAMERA

NEW CCD progressive camera.

Image capture board NOT required.

Low cost, high frame rate bus-power performance.

ARTCAM-150PⅢ provides high-definition images by using 1.5M pixels image sensor.



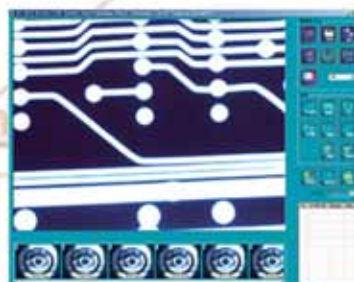
## Features

- \*1.5M Pixel CCD Camera - High Resolution & High Sensitivity
- \*Gain control & Shutter control
- \*External trigger
- \*Stable supply (at least 5 years)
- \*High speed bayer conversion allowed by SSE2
- \*SDK(Software Development Kit) available
- \*Capture image at 10 bits (SDK)
- \*Low price
- \*Monochrome available ARTCAM-150PⅡ-BW

## Specifications

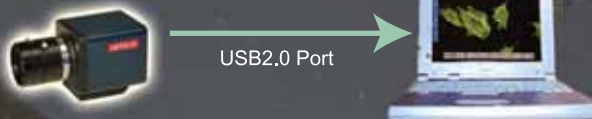
- \*Image area size : 1/2"CCD
- \*Maximum resolution : 1360 x 1024
- \*Pixel size : 4.65 x 4.65 μm
- \*Frame rate : 10fps
- \*Type of CCD : Inter-line model
- \*S/N : 50dB or higher
- \*Lens mount : C mount (lens is not included)
- \*Dimension : 50(W) x 56(H) x 59.3(D)mm 180g
- \*Power : Supplied from USB port
- \*Optical size : 7.6 x 6.2mm

## Contents



Viewer software  
(2D measurement software is sold separately)

## System Configuration



Minimum System Requirements :  
Windows 2000/XP, CPU 1.7GHz, Memory 512MB

# ARTCAM-150PⅢ



**ARTRAY INC. U.S.A. OFFICE**  
646 NE Josephine Ct., Hillsboro, OR 97124, U.S.A.  
TEL: 503-380-7809 FAX: 503-648-4233  
URL: <http://www.artray.us> E-mail: [sales@artray.us](mailto:sales@artray.us)

**ARTRAY CO., LTD TOKYO HEAD OFFICE**  
Ueno bldg, 1-17-5 koudenjikota Suginami-ku Tokyo 166-0002, Japan  
TEL: +81-3-3389-5488 FAX: +81-3-3389-5486  
URL: <http://www.artray.co.jp> E-mail: [artray@artray.co.jp](mailto:artray@artray.co.jp)