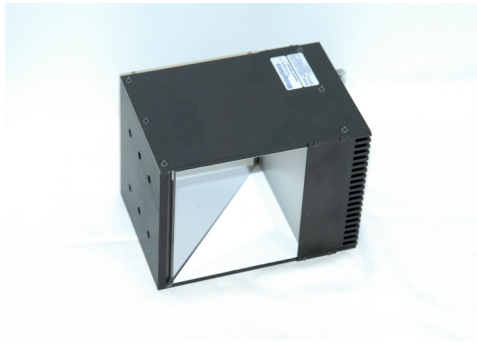


## MetaBright™ Diffuse Axial Light

Model#: DAL305



- Size: 3 x 3 in active area
- Over thirty five SMD per inch array makes our diffuse axial lights the brightest most stable coaxial lighting in the industry
- 6 different sizes of diffuse axis light models to fit different application needs
- Exclusive optical beam splitter and diffuser stack
- Machined aluminum housing with optional dust covers

### Specifications:

|                       |                         |
|-----------------------|-------------------------|
| Current Consumption   | R: 0.6A<br>W/G/B: 0.85A |
| Housing               | Alluminum               |
| Finish                | Powder Coated Black     |
| Intensity Uniformity  | +/-5%                   |
| Operating Temperature | 120° F Max              |
| Illuminance           | 32,000 Lux              |
| Compliance            | CE/RoHS                 |
| Lifetime Hours        | 75,000 Hours            |

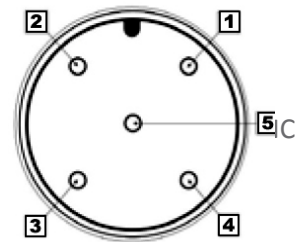
### Wiring Diagram

| Flying Leads | Function |
|--------------|----------|
| RED          | +24VDC   |
| BLACK        | Ground   |

24 AWG 4 WIRES CABLE X 1  
When not using intensity control, connect 0-10V control line to +24 (Max Intensity Control = 25V) and intensity control ground to ground

### M12 Connector

| PIN # | Function                  |
|-------|---------------------------|
| 1     | +24VDC                    |
| 2     | 0-10VDC Intensity Control |
| 3     | Ground                    |
| 4     | Signal Ground             |



### Active Area

3 x 3in  
76.2mm x 76.2mm

### Dimensions

3.36in x 5.3in x 3.32in  
85.24mm x 134.7mm x 84.33mm

### ORDERING INFORMATION:

• D A L 3 0 5 -  - 2 4 -

|            |                |               |  |
|------------|----------------|---------------|--|
| <b>W</b>   | White 6000k    | <b>*BLANK</b> | 10 ft. Flying Leads                            |
| <b>R</b>   | Red 630nm      | <b>T</b>      | M12 Quick Disconnect                           |
| <b>G</b>   | Green 530nm    | <b>ILD</b>    | In Line Dimmer                                 |
| <b>B</b>   | Blue 455 nm    | <b>ILS</b>    | In Line Strobe (customer provide trigger info) |
| <b>IRN</b> | Infrared 850nm |               |  |
| <b>RGB</b> | 625/530/70nm   |               |  |

## MetaBright™ Diffuse Axial Light Model#: DAL305

### Contact us:

Contact your Metaphase Technologies Representative for options including: Diffuser Choice, Polarizer & Light Control Film, Specific Intensity & Uniformity, & Wavelength.

### Drawing/Diagram

