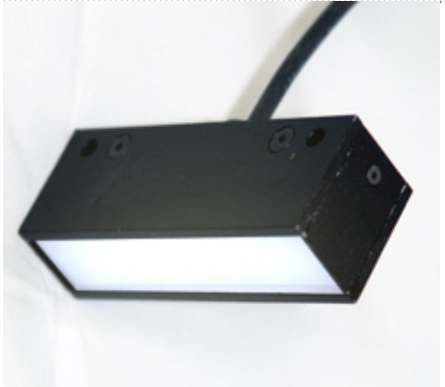


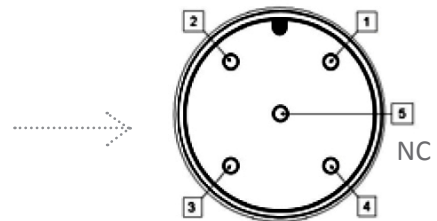
MetaBright™ Narrow Backlight Model#: MB-NBL105



- HIGH ASPECT RATIO BACKLIGHTS, THE BRIGHTEST MOST EFFECTIVE IN THE INDUSTRY
- STAINLESS STEEL CASES AND ACRYLIC DIFFUSER FOR RUGGED PERFORMANCE
- 35 SMT ARRAY LED PROVIDE MAXIMUM INTENSITY AREA WITH +/- 0.5%
- LONG PROFILE PERFECT FOR LONG PARTS OR LINESCAN APPLICATIONS

| Active Area | | Dimensions | | Specifications: | |
|---|--|---|--|-----------------------|---------------------------|
| Length: 3.75in / 95.25mm Width: 0.5in / 12.7mm | | Length: 3.88in / 98.55mm Width: 1in / 25.4mm Height: 1.55in / 39.37mm | | Current Consumption | RED: 0.15A W/B/G: 0.2A |
| | | | | Finish | Powder Coated Black |
| | | | | Intensity Uniformity | +/-5% |
| | | | | Operating Temperature | 120° F Max |
| | | | | Illuminance | 68,000 Lux |
| | | | | Compliance | CE/RoHS |
| | | | | Lifetime Hours | 75,000 Hours |

| Wiring Diagram | | M12 Connector | |
|----------------|----------|---------------|----------|
| Flying Leads | Function | PIN # | Function |
| RED | +24VDC | 1 | +24VDC |
| BLACK | Ground | 3 | Ground |



ORDERING INFORMATION:

• **MB-NBL105** - □ - 24 - □

| | | | |
|------------|----------------|---------------|--|
| W | White 5500k | *BLANK | 10 ft. Flying Leads |
| R | Red 630nm | T | M12 Quick Disconnect |
| G | Green 530nm | ILD | In Line Dimmer |
| B | Blue 455 nm | ILS | In Line Strobe (customer provide trigger info) |
| IRL | Infrared 880nm | | |
| UVL | (long) 395nm | | |
| UVS | (short) 365nm | | |

MetaBright™ Narrow Backlight Model#: MB-NBL105

Drawing/Diagram

