

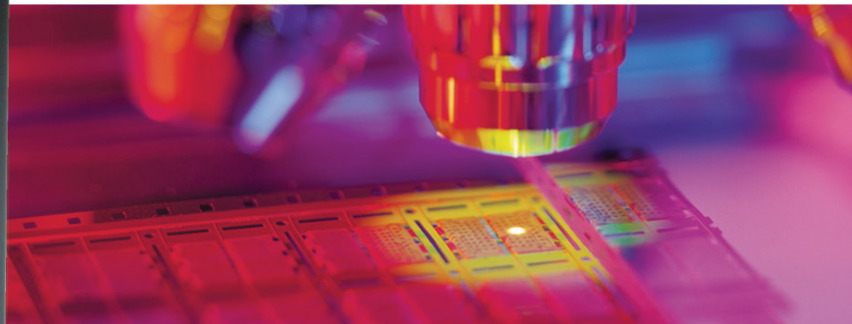


vieworks

VA-1MC / VA-2MC / VA-4MC

VA-8MC / VA-16MC / VA-29MC

1 / 2 / 4 / 8 / 16 / 29 MEGAPIXEL RESOLUTION
HIGH SPEED PROGRAMMABLE DIGITAL CAMERA



VA Series cameras are progressive scan high performance digital cameras based on the latest 5.5 μm 4-tap CCD sensor technology of Truesense Imaging, Inc. (formerly Kodak Imaging Solutions).

Truesense Imaging's new 4-tap readout structure results in 2 \times the frame rate as compared to previous generation image sensors. Frame rates as high as 125 frames per second at 1 million pixel resolution can be achieved. This camera series is ideal for demanding applications such as semi-conductor inspection, electronics inspection, aerial imaging inspection, and FPD inspection.

Main Features

- * Camera Link Interface
- * Truesense Imaging Progressive Scan Interline Transfer CCD Imager
- * 8 / 10 / 12 bit Data Output
- * 1 / 2 / 4 Tap for full resolution readout from 5 up to 120 fps
- * Field Upgradeable Firmware
- * Flat Field Correction
- * Pixel Defect Correction
- * Excellent anti-blooming and anti-smear

Applications

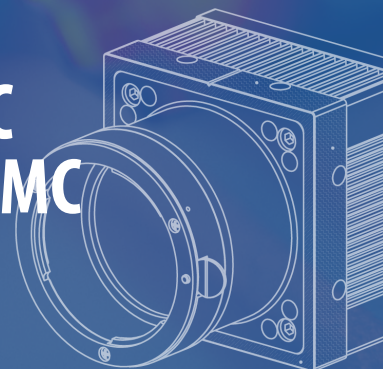
- * Machine Vision Inspection
- * Research and Scientific Imaging
- * Microscopy and Metrology
- * Remote Sensing and Scanning
- * Intelligent Transport System (ITS)

machinevision.vieworks.com



VA-1MC / VA-2MC / VA-4MC VA-8MC / VA-16MC / VA-29MC

1 / 2 / 4 / 8 / 16 / 29 MEGA PIXEL RESOLUTION
HIGH SPEED PROGRAMMABLE DIGITAL CAMERA



Specifications

Model	VA-1M	VA-2M	VA-2M (HD)	VA-4M
Resolution (H × V)	1024 × 1024	1600 × 1200	1920 × 1080	2336 × 1752
Sensor (Truesense Imaging)	KAI-01050	KAI-02050	KAI-02150	KAI-04050
Sensor Size (Optical Format)	1/2"	2/3"	2/3"	1"
Sensor Type	Progressive Scan Interline Transfer CCD			
Pixel Size	5.5 μm × 5.5 μm			
Max. Frame Rate	125 fps	70 fps	67 fps	33 fps
Electronic Shutter	Global Shutter			
Pixel Data Format	8 / 10 / 12 bit			
Interface	Base Camera Link			
Camera Link Clock Speed	40 / 80 MHz			
Trigger Mode	Free-Run, Standard, Fast, Double, Overlap Programmable Exposure Time and Trigger Polarity			
Dynamic Range	64 dB			
Dimension / Weight	68 mm × 68 mm × 54 mm / 420 g (with C-mount) 68 mm × 68 mm × 83 mm / 460 g (with F-mount)			
Temperature	Operating: -5°C ~ 40°C, Storage: -30°C ~ 65°C			
Lens Mount	C-mount or F-mount, Custom mount available upon request			
Power	10 ~ 14 V DC, Max. 6W			
Configuration Software	Configurator			

Specifications

Model	VA-8M	VA-16M	VA-29M
Resolution (H × V)	3296 × 2472	4896 × 3264	6576 × 4384
Sensor (Truesense Imaging)	KAI-08050	KAI-16050	KAI-29050
Sensor Size (Optical Format)	4/3"	32 mm (APS-H)	35 mm
Sensor Type	Progressive Scan Interline Transfer CCD		
Pixel Size	5.5 μm × 5.5 μm		
Max. Frame Rate	16 fps	8 fps	5 fps
Electronic Shutter	Global Shutter		
Pixel Data Format	8 / 10 / 12 bit		
Interface	Base Camera Link		
Camera Link Clock Speed	40 / 80 MHz		
Trigger Mode	Free-Run, Standard, Fast, Double, Overlap Programmable Exposure Time and Trigger Polarity		
Dynamic Range	64 dB		
Dimension / Weight	68 mm × 68 mm × 54 mm / 420 g (with C-mount) 68 mm × 68 mm × 83 mm / 460 g (with F-mount)	68 mm × 68 mm × 104 mm / 500 g (with F-mount)	
Temperature	Operating: -5°C ~ 40°C, Storage: -30°C ~ 65°C		
Lens Mount	C-mount or F-mount, Custom mount available upon request		
Power	10 ~ 14 V DC, Max. 6W	10~14 V DC, Max. 8W	
Configuration Software	Configurator		

Ordering Scheme

VA - 29M C - M 5 A0	
<p>Series VA Series</p> <p>Sensor Resolution</p> <p>1M - 1 Megapixels 2M - 2 Megapixels 4M - 4 Megapixels 8M - 8 Megapixels 16M - 16 Megapixels 29M - 29 Megapixels</p> <p>Interface C - Camera Link</p>	<p>Sensor Options A0 - Truesense Imaging</p> <p>Frame Rate</p> <p>5 - 5 fps 8 - 8 fps 16 - 16 fps 33 - 33 fps 67 - 67 fps 70 - 70 fps 125 - 125 fps</p> <p>Mono / Color M - Monochrome C - Color</p>

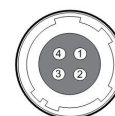
Connector Specification

Power



1 2 3 : +12V DC, 4 5 6 : GND
(HR10A-7R-6PB)

Control



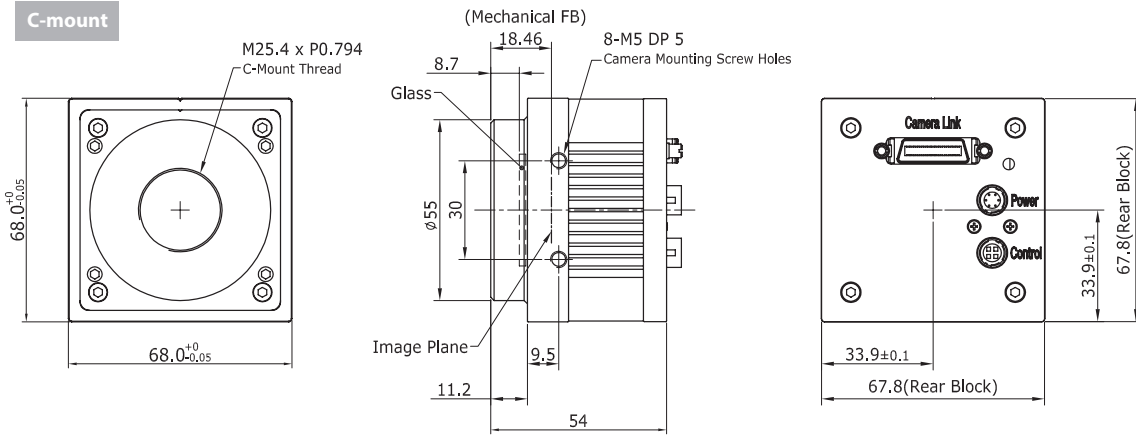
1 : Trigger IN+, 2 : Trigger IN-
3 : Strobe OUT- (GND), 4 : Strobe OUT+
(HR10A-7R-4SB)

Connectors on camera body

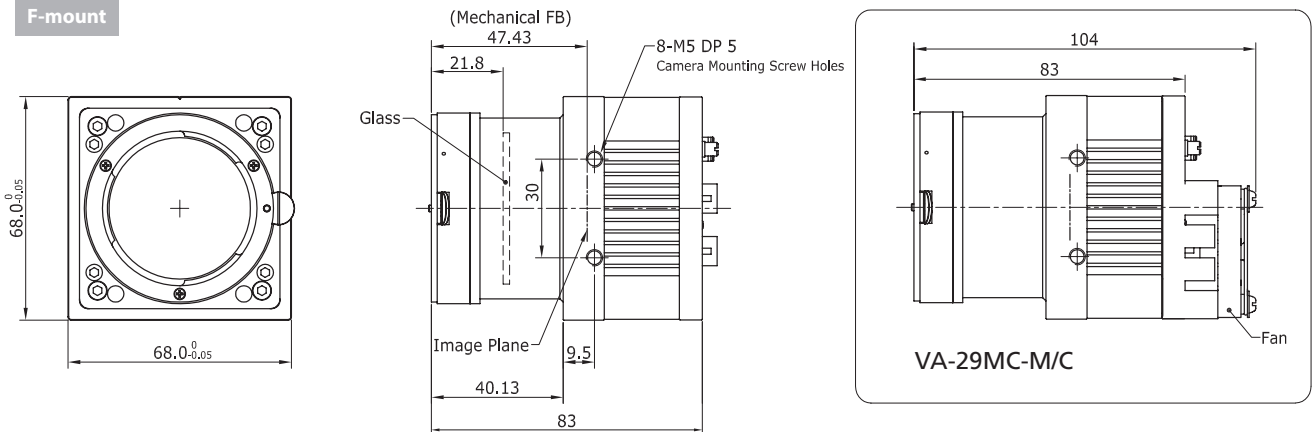
Mechanical Dimensions

Unit : mm

C-mount



F-mount



For more information please contact local distributor or visit our website at www.vieworks.com

Reproduction in whole or in part without written permission is prohibited. Vieworks Co., Ltd. is not responsible for any technical or typographical errors and reserves the right to make changes to products, specifications and documentation without prior notice.

RA14-11A-008



ISO-9001, ISO-13485

Corporate Headquarters

Vieworks Co., Ltd. # 604 Suntechcity II, 307-2 Sangdaewon-dong, Jungwon-gu, Seongnam-si, Gyeonggi-do, 462-806 South Korea
 tel +82-70-7011-6161 fax +82-31-737-4936 e-mail sales@vieworks.com website machinevision.vieworks.com